

New Nadina Explorations Limited

TSX-V NNA

www.nadina.com

**SILVER QUEEN PROPERTY  
OWEN LAKE BC**

**New Nadina Explorations Limited  
Fact Sheet**

**Silver Queen Property (100%)  
Hidden Copper-Moly-Gold Porphyry  
discovered 2011**

1. High grade Silver Vein discovery: Open to depth and strike. Newly discovered section of NG3 epithermal vein. Further drilling planned to warrant decision on opportunity for underground production.
2. The large Itsit Cu-Mo-Au porphyry system discovered in 2011 remains untested for higher grade zones.



High grade molybdenum – REE potential

**Shares issued: March 31, 2019** Shares  
Issued: 15,054,433  
Fully diluted: 17,398,184

**Monument Diamond Project,  
Lac de Gras NWT 57.49%**

Monument, strategically located forms part of the Lac de Gras cluster occurring within 40 km of the Ekati and Diavik diamond mines awaits a JV partner. It contains twelve known diamond bearing kimberlites. RIP samples produced 2,201.7 kg of kimberlite yielded 955 diamonds including the largest diamond found to date from the Monument property weighing 0.445 carats. The DD17 kimberlite gave 964 diamonds from 2,137.6 kg of kimberlite.

**Directors & Management**

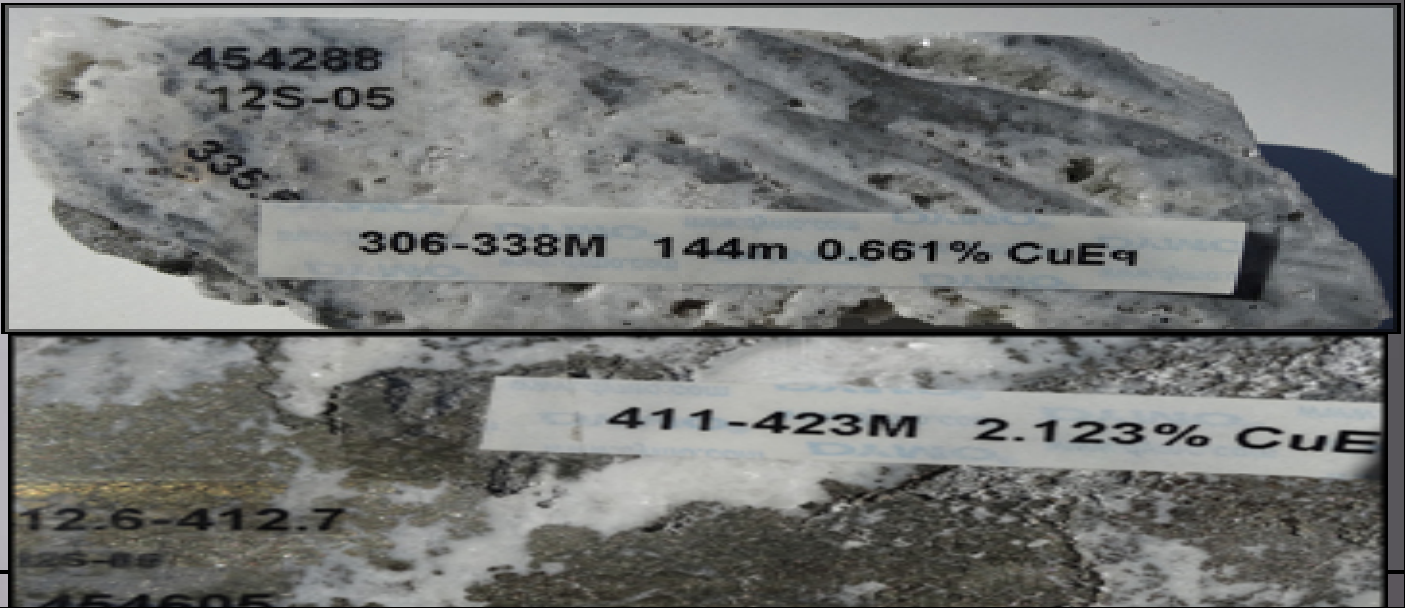
John Jewitt, - Director, CEO  
Anthony Jewitt - Director  
William Meyer – Director  
Peter Cooper, Director  
Courtney Shearer- Director  
Fred Sveinson, Senior Advisor  
Jim Hutter , QP Silver Queen  
Kevin Kivi, QP Monument

**Contact: John Jewitt  
(250) 445-2260**

# New Nadina Explorations Limited

## Silver Queen Property – NG3 epithermal Vein in 12S-05

• [www.nadina.com](http://www.nadina.com) • TSX-V: NNA  
 nadina2005@shaw.ca Phone: 250 445 2260



## 2019 Drill Program: 9 Holes to Extend #3 Vein South HG 13 Holes on NG-3, Chisholm, & George Lake Veins

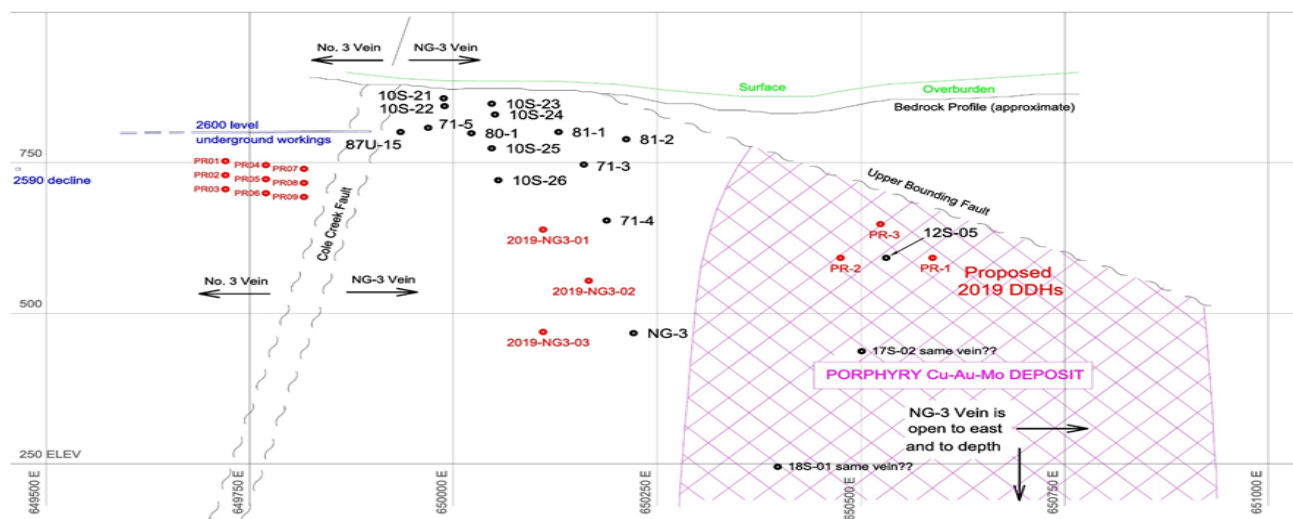


Figure 1: NG-3 Vein Diamond Drill Intersections

NG-3 Vein Longitudinal Section projected onto E-W vertical plane, view looking north  
 JMH June 15, 2017 rev Mar. 25, 2019